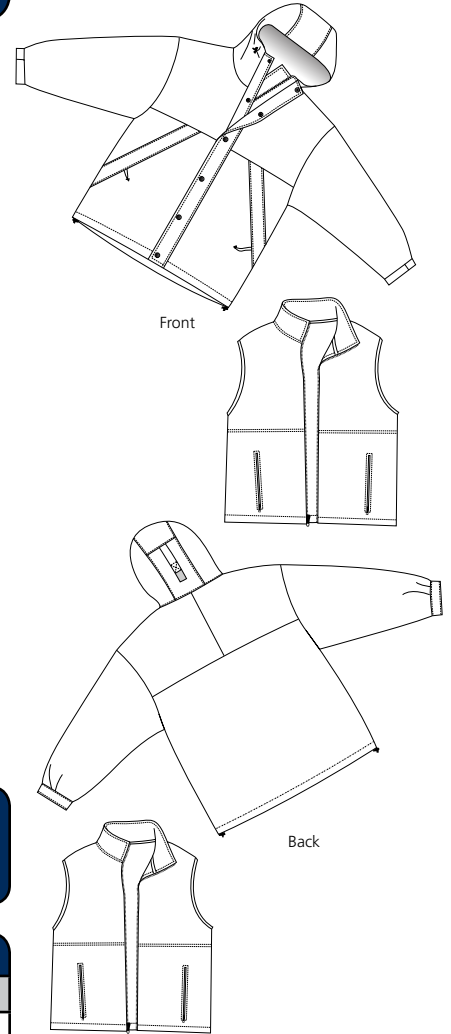


# 3-in-1 Jacket

PORT AUTHORITY®



**J777**

- \* M-Tek™ nylon shell
- \* Mesh lining
- \* Removable fleece vest
- \* Water repellent
- \* Wind resistant

**Jacket Care Instructions:**  
Machine wash cold, gentle cycle. Tumble dry low. Cool iron if needed. Do not bleach.

**Care Instructions:**  
Machine wash cold, separately, gentle cycle. Do not bleach. Tumble dry low. Do not iron.

## Finished Jacket Measurements in Inches

Size	XS	S	M	L	XL	2XL	3XL	4XL
Length	31	31.5	32	32.5	33	33.5	34	34.5
Chest	22.5	24	25.5	27	28.5	30	31.5	33
Sleeve	32	34	36	36.5	37	37.5	38	38.5
Areas for Decoration	Left Chest, Full Back		Port Pocket™		Left Zipper, Back Lining			

Chest width measured 1" below arm hole.

Body length measured from back neck seam to hem. Sleeve length measured from center back seam to hem.

## Finished Vest Measurements in Inches

Size	XS	S	M	L	XL	2XL	3XL	4XL
Length	25	26	27	28	29	30	31	32
Chest	19	20.5	22	23.5	25	26.5	28	29.5
Areas for Decoration	L/R Chest		Port Pocket™		NA			

Chest width measured 1" below arm hole. Body length measured from back neck seam to hem.

## Colors

		Black/Black
		Hunter/Navy
		Navy/Navy
		Red/Black
		Royal/Navy

**Please Note:**

Colors shown are approximate and for reference only. For closest match see PMS colors, or for exact match, returnable samples and grommeted samples are available.

## Color Chart

Jacket Colors	Black	Hunter	Navy	Red	Royal
Textile PMS	19-4005TC	19-5212TC	19-3921TC	19-1664TC	19-4057TC
General PMS	426C	5467C	533C	187C	647C
Vest Colors	Black	Navy			
Textile PMS	19-4007TC	19-3920TC			
General PMS	Process Black	533C			